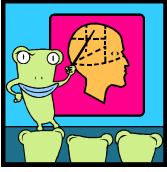


Name _____

Mind Map

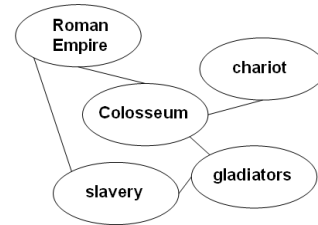


Your Task: Whenever we learn new things our brain makes connections to other things we already know. You will create a visual map that shows how your brain connects the important ideas/topics for this unit. Your end result will be something like a web. Make your map look unique and artistic.

This entire sheet must be submitted with your assignment, stapled to the upper left hand corner.

Instructions:

1. Create a list of 20 things (people, places, ideas, inventions, etc.) for the topic.
2. Create a rough draft of your mind map.
 - a. On regular paper write the title of the unit in a bubble, (or block, or whatever shape you choose) in the middle of the page.
 - b. Draw another bubble with one of the words from your list of 20 connected to the first bubble anywhere on the page.
 - c. Draw another bubble with another word. Connect it either to the first bubble or to the other word. (If they are related in some way). Continue adding bubbles and connections until all 20 words are in a bubble and connected to some other bubble.
 - d. Look over your map and add a second connection for each bubble. **EACH BUBBLE MUST CONNECT TO AT LEAST 2 OTHER BUBBLES!**
3. On the back of your paper, choose any 5 connections you made on your map and explain why you made them in 1-2 complete sentences each. (Tell me how those two items are related other than “they both came from the same place”.)
4. Create the final draft of your mind map.
 - a. If needed, rearrange your bubbles so connection lines can be as straight as possible.
 - b. Draw each bubble and word neatly. Use different colors throughout (you should have your colors represent certain things)



Mind Map Rubric

Mind map includes 20 ideas relevant to the topic or unit	____/10
Ideas are logically connected to at least two other bubbles	____/10
5 sentences show realistic and logical connections between ideas	____/20
Neatness/organization	____/10
Color is used to show connections and to enhance the mind map.	____/10
Total:	____/60